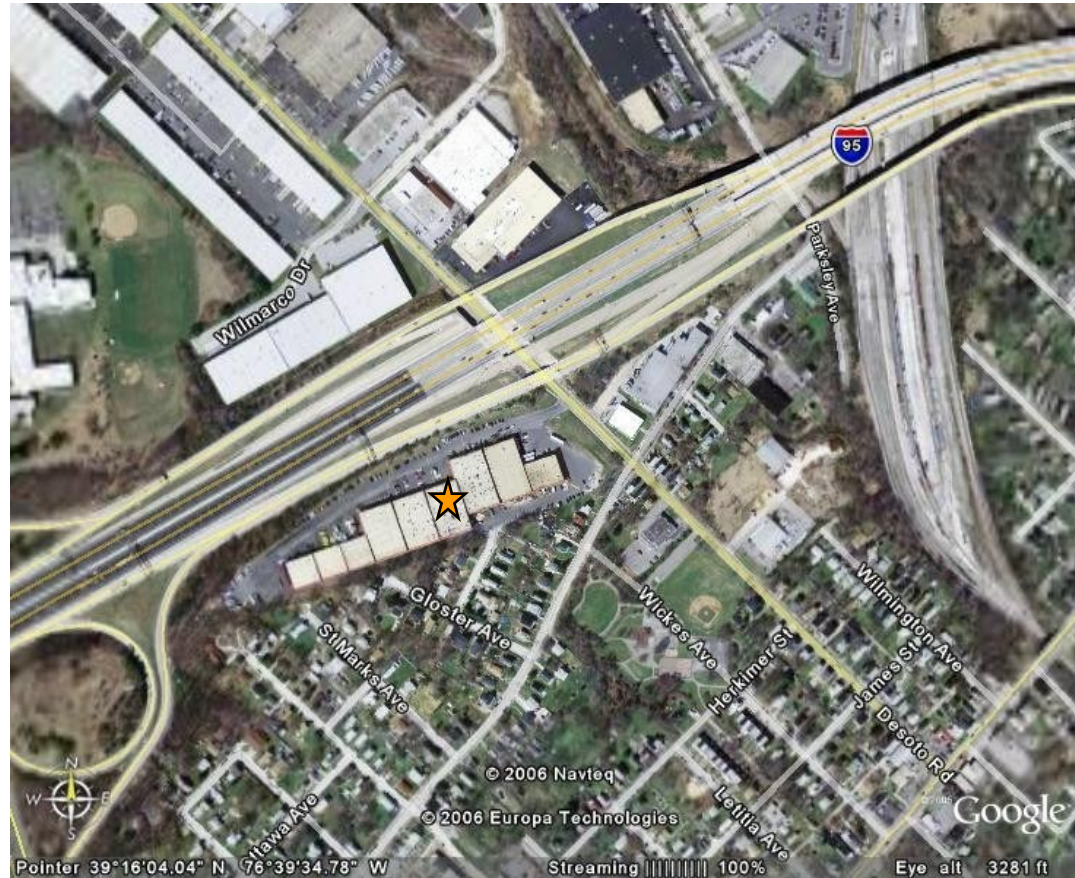


DESOTO ROAD

1400 - 1464 DeSoto Road
Baltimore, MD 21230



Directions:

I-95 North to
Exit 50 - Caton Avenue South
Left on Georgetown Road
Left on DeSoto Road
Properties will be on the left

At Merritt Properties, we define our mission simply: Creating Homes for Businesses. Established in 1967, Merritt Properties is the largest privately held commercial real estate firm in Maryland, with nearly 16 million square feet of Class A office, flex, warehouse, industrial, retail and build-to-suit in the Baltimore/Washington area. We design, build, lease and manage our properties for the long term with a commitment to providing the highest quality service to all of our customers.

410.298.2600 410.298.9644 FAX www.merrittproperties.com



DESOTO ROAD

1400 - 1464 DeSoto Rd.
Baltimore, MD 21230



Located in the Baltimore City Enterprise Zone

Minutes from I-695, I-95 and major arteries serving the Baltimore Metropolitan Area.

- 154,800 SF building
- One-story masonry construction
- 20' clear ceiling height
- Docks and drive-ins
- Comcast service available
- 120/208 volt, 3-phase, 4-wire service
- Gas heat / public utilities
- Sprinklered
- Zoned M-1-1 - Baltimore City
- Manufacturing; Warehousing; Office; Incidental Retail

Contact:

Vince Bagli, Jamie Campbell,
Liz Tarran-Jones or Steve Shaw
Phone: 410.298.2600
Fax: 410.298.9644
vbagli@merrittproperties.com
jcampbell@merrittproperties.com
LTJ@merrittproperties.com
sshaw@merrittproperties.com
www.merrittproperties.com

2066 Lord Baltimore Drive, Baltimore, MD 21244



DESOTO ROAD

1400 - 1464 DeSoto Road
Baltimore, MD 21230

ACREAGE: 11.3
ZONED: W-1-1 - Baltimore City
USES: Manufacturing; Warehousing;
Office; Incidental Retailing

1400-64 - 154,800 SF +/-

