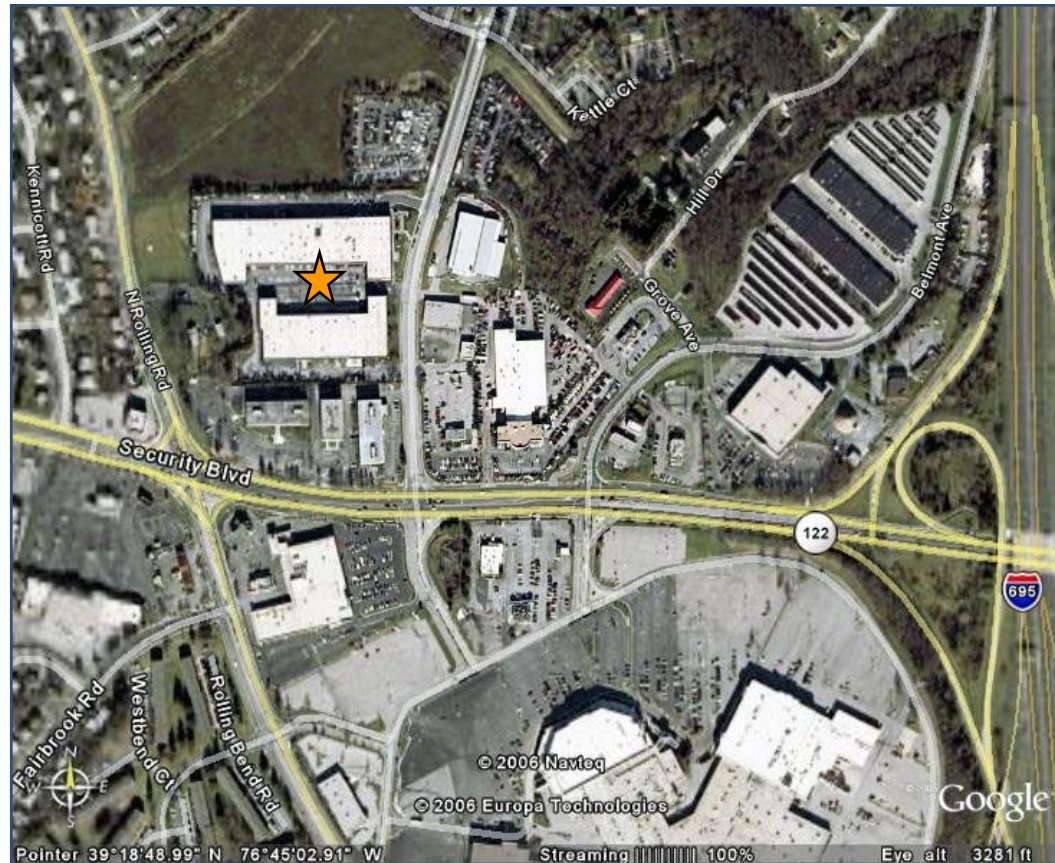


# SECURITY

2010-76 Lord Baltimore Drive  
Baltimore, MD 21244



## Directions:

I-695  
Exit 17B - Security Boulevard  
Bear right onto Security Boulevard  
Right at second light onto Lord Baltimore Drive  
Third entrance on the left

At Merritt Properties, we define our mission simply: Creating Homes for Businesses. Established in 1967, Merritt Properties is the largest privately held commercial real estate firm in Maryland, with nearly 15 million square feet of Class A office, flex, warehouse, industrial, retail and build-to-suit in the Baltimore/Washington area. We design, build, lease and manage our properties for the long term with a commitment to providing the highest quality service to all of our customers.

410.298.2600 410.298.9644 FAX [www.merrittproperties.com](http://www.merrittproperties.com)



# SECURITY

2010-76 Lord Baltimore Drive  
Baltimore, MD 21244



Prime location opposite Security Square Mall

- One - story block and brick construction with attractive steel trim
- Two buildings totaling 186,740 SF
- Ample parking
- 20' clear ceiling height
- Dock loading
- Sprinklered
- Public Utilities
- 120/208 3 phase-4 wire electric service
- Gas heat

## Contact:

Pat Franklin, WhitLevering or  
Lou Boeri  
Phone: 410.298.2600  
Fax: 410.298.9644  
[lpfranklin@merrittproperties.com](mailto:lpfranklin@merrittproperties.com)  
[wlevering@merrittproperties.com](mailto:wlevering@merrittproperties.com)  
[boeri@merrittproperties.com](mailto:boeri@merrittproperties.com)  
[www.merrittproperties.com](http://www.merrittproperties.com)

2066 Lord Baltimore Drive, Baltimore, MD 21244



# SECURITY

2010-76 Lord Baltimore Drive  
Baltimore, MD 21244

ACREAGE: 11  
ZONED: MLR - Baltimore County  
USES: Manufacturing; Warehousing; Distribution;  
Office

2010 - 76,175 SF +/-  
2040 - 110,565 SF +/-

