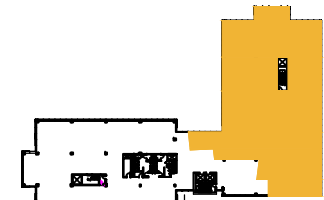


TOTAL SF AVAILABLE -14,373 RSF (12%)

ACTIVE SCI SCIF - 1,496 SF

INACTIVE SCIF - 970 SF

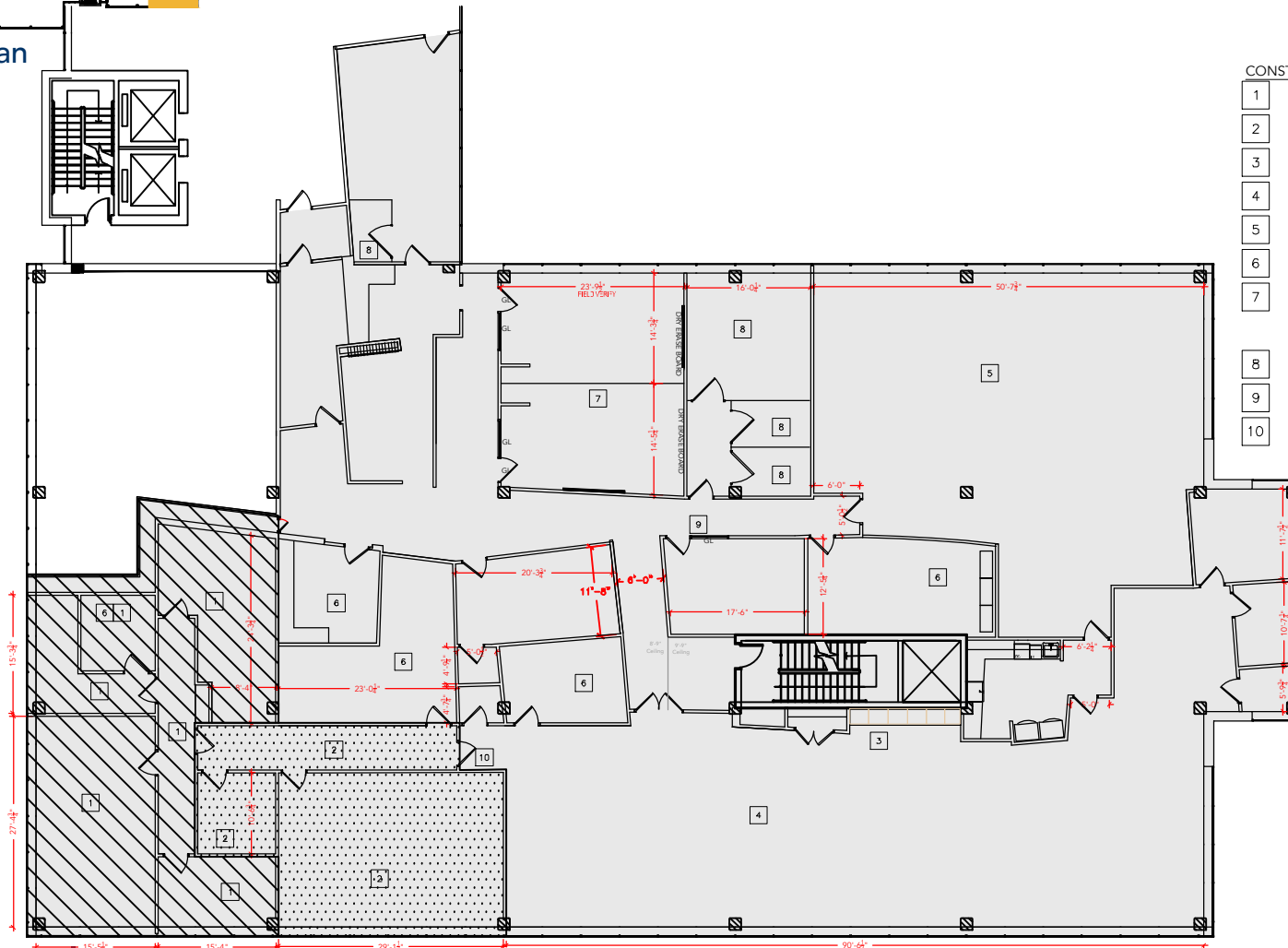
[Click to access 3D model](#)



Key Plan

CONSTRUCTION GENERAL NOTES:

- 1 1,496 SQUARE FEET OF ACTIVE SCI LEVEL SCIF
- 2 970 SQUARE FEET OF SKIF LEVEL NOT CURRENTLY USED
- 3 COUNTER TOP WITH STORAGE BELOW
- 4 24 CUBES CURRENTLY WITH OPTION FOR ADDITIONAL 8 CUBES
- 5 22-24 EXISTING CUBES
- 6 SUPPLEMENTAL A/C
- 7 CONFERENCE ROOM WITH RETRACTABLE ACCORDION WALL AND CEILING MOUNTED PROJECTION SCREENS ON EACH SIDE
- 8 CAGED STORAGE AREA
- 9 ACCESS CONTROL
- 10 CYPHER LOCK



Floor Plan