



- KEY:**
- = CMU Partition
 - = Existing Partition
 - = New Partition
 - = Low Partition
 - = Demolished Partition
 - = Outlet Loc. Approx.
 - 00 = Ceiling Heights
 - 00 = Door Heights

STANDARD SPECIFICATIONS:

- Partition** Free standing partitions to be 1/2" sheet rock over 3 5/8" metal stud with fiberglass insulation.
- Mason walls** Existing to remain as is or furred out with 1 5/8" metal stud and 1/2" drywall when indicated on plan.
- Doors** Existing doors shall remain U.O.N. (minimum door size shall be 3'x6'-8")
- Ceiling** - Existing suspended acoustical tile and light fixtures to remain U.O.N.
- Electric** Existing to remain U.O.N. Standard private offices have 3 duplex outlets.
- Millwork** - Existing work surfaces and pantry millwork to remain U.O.N.
Standard millwork material is plastic laminate.
- Finishes** Existing finishes shall remain U.O.N. Standard wall paint is (typically) 2 coats of satin latex.
- Special conditions at tenants cost** limited to upgrades & specialty HVAC

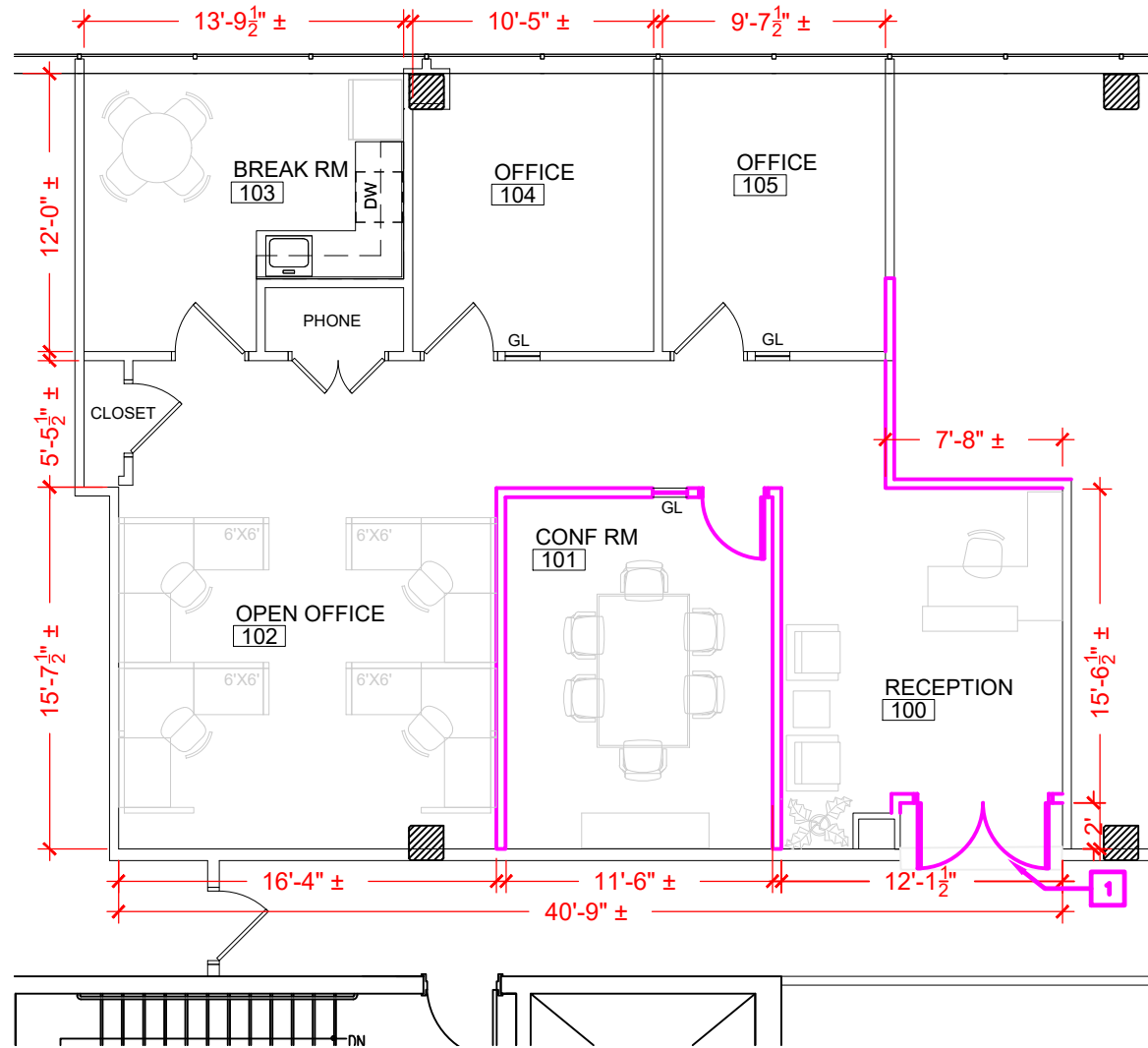
GENERAL NOTES:

Merritt is not responsible for providing or installing appliances, phones, computer wiring, furniture and/or custom built-ins unless specified. Floor plan may be field adjusted due to existing conditions not shown on plan.

AVAILABLE
 9.26.23 NG
 Suite 440
 1,501 RSF (16%)

CONSTRUCTION GENERAL NOTES:

- 1** INSTALL GLASS ENTRY DOORS FROM SUITE 470



PLAN NOT TO SCALE - THIS IS NOT A CONSTRUCTION DOCUMENT

CCP 100
 6021 UNIVERSITY BLVD.
 ELLICOTT CITY, MD 21043
 SUITE 440

**PRELIMINARY
 SPACE PLAN**

DATE : NEEDS TO BE FIELD VERIFIED
 ASBUILT DRAWN BY : xx
 DRAWING# : HF3-440



2066 LORD BALTIMORE DRIVE BALTIMORE, MD 21244
 PHONE 410-298-2600 FAX: 410-298-9644
 www.MerrittProperties.com